

## Crio Smart 2 Half Door Dual Digital Refrigerator, 670lt (-2/-2) - Remote

ITEM # \_\_\_\_\_  
MODEL # \_\_\_\_\_  
NAME # \_\_\_\_\_  
SIS # \_\_\_\_\_  
AIA # \_\_\_\_\_



729655 (ARX71FRRR)

2-half door, dual temperature refrigerator 670lt, -2+10°C /-2+10°C, digital, AISI 304, remote

### Short Form Specification

#### Item No.

Two half door refrigerator with internal and external structure in 304 AISI stainless steel; external back panel in galvanized steel and bottom panel in anti-corrosive material. Digital control with cabinet temperature display and setting and manual activation of defrost cycle. Fully compliant HACCP digital controls include visible alarms. Optimized back to front forced air flow provides even temperature distribution and fast cooling in any conditions. Fitted with 75 mm-thick cyclopentane insulating foam. On-site reversible door features lock and door microswitch to switch off the fan when the door is opened. Hidden evaporator to guarantee higher storage capacity and less corrosion problems. Remote refrigeration unit; ventilated operation; automatic defrost and evaporation of defrost water. Dual operating temperature: -2/+10°C -2/+10°C. Integrated RS485 port to facilitate connection to a remote computer and integrated HACCP systems.

### Main Features

- Large storage area suitable to contain 2/1 GN grids or shelves on anti-tilt runners.
- Right hinged full door.
- Equipped with single phase electrical cable and Schuko plug for easy and fast installation.
- Cabinet fitted with up to 75 mm thickness of cyclopentane insulation for best insulating performance with 100% environmental protection (thermal conductivity: 0,020 W/m\*K).
- Hidden evaporator thus guaranteeing higher storage capacity and less corrosion problems.
- Integrated RS485 port to facilitate connection to a remote computer and integrated HACCP systems.
- Easy serviceability thanks to the intuitive control panel with access via app.
- Internal structure with numerous charging positions available to host grids, ensuring higher net capacity and a greater storage space.
- 60 mm-thick insulation covering the evaporator can be easily removed with a single operation.
- Connectivity ready for real time access to connected appliances from remote and data monitoring (requires optional accessory).
- Rilsan coated grids for improved protection.
- Optimized back to front forced air flow provide even temperature distribution and fast cooling in any conditions.
- Automatic defrost.
- Large digital white-digit display with cabinet temperature display and setting, activation of turbo frost cycle (to rapidly cool warm loads) and possibility to activate manually the defrost cycle.
- Right hinged two 1/2 doors.
- Dual temperature type: -2 +10 °C/-2 +10 °C.
- Digital control with cabinet temperature display and setting and manual activation of defrost cycle. Fully compliant HACCP digital controls include visible alarms.
- Tropicalized unit.

### Construction

- Constructed from the highest quality AISI 304 Stainless steel.
- Interior base with rounded corners, pressed from a single sheet.
- Stainless steel runners and supports easily disassembled.
- Anti-corrosion bottom avoids any damage that may be caused to the cabinet by aggressive detergents employed to clean the floors.
- Easy access to the main components for maintenance.
- Lockable door.
- Mounted on adjustable Stainless steel feet, with castors as an option.
- Refrigerant type: R134a.
- Doors are self-closing and can be fully opened up to 180°.
- The rounded internal corners, the easily removable runners and grids allow for ease of cleaning and high hygiene standards.
- Remote refrigeration unit.

APPROVAL: \_\_\_\_\_

### Sustainability

- Door switch stops the fan when door is opened to avoid cold air exiting the cell, thus saving energy.
- CFC and HCFC-free insulation.
- Automatic evaporation of the defrosting water by hot gas on the top for energy saving.
- Removable triple-chamber balloon magnetic gasket to improve insulation and reduce energy consumption and ease of cleaning.
- Cleaning-free condenser: the structure of the wire frame condenser prevents dust and grease accumulation thus avoiding periodical cleaning operations and reducing energy consumption.

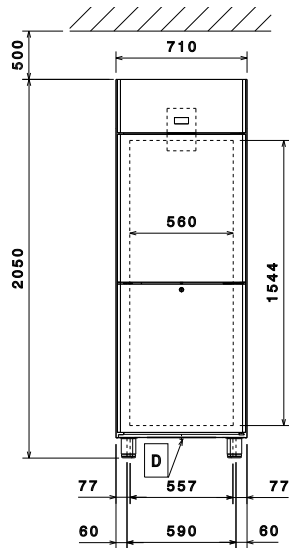
### Included Accessories

- 3 of 2/1GN gray rilsan grid with 2 runners PNC 881020

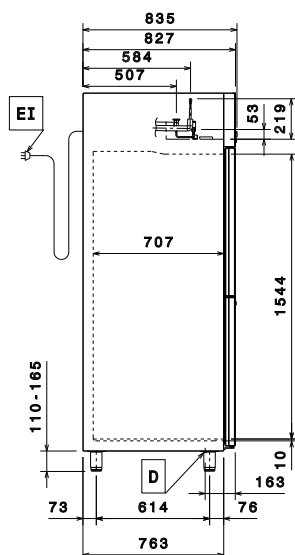
### Optional Accessories

- |   |            |                          |
|---|------------|--------------------------|
| • 2 stainless steel runners for refrigerated cabinets - (Marine)            | PNC 880242 | <input type="checkbox"/> |
| • 1/1GN set of 8 PVC containers for fish                                    | PNC 880243 | <input type="checkbox"/> |
| • Spacer for 670L and 1430L refrigerated cabinets                           | PNC 880248 | <input type="checkbox"/> |
| • Pedal opening for cabinets  | PNC 880324 | <input type="checkbox"/> |
| • Kit remote alarm  | PNC 880570 | <input type="checkbox"/> |
| • Ethernet connectivity kit IJF for Refrigeration                           | PNC 880685 | <input type="checkbox"/> |
| • Plastic container with false bottom, 1/1GN                                | PNC 880705 | <input type="checkbox"/> |
| • 2/1GN gray rilsan grid  | PNC 881004 | <input type="checkbox"/> |
| • AISI 304 stainless steel grid, 2/1GN                                      | PNC 881016 | <input type="checkbox"/> |
| • AISI 304 stainless steel grid with 2 runners, 2/1GN                       | PNC 881018 | <input type="checkbox"/> |
| • 2/1GN gray rilsan grid with 2 runners                                     | PNC 881020 | <input type="checkbox"/> |
| • Set of 2 stainless steel runners for 670/1430L refrigerators and freezers | PNC 881021 | <input type="checkbox"/> |
| • PVC container with lid and 2 runners, 2/1GN                               | PNC 881039 | <input type="checkbox"/> |
| • 2/1GN perforated shelf  | PNC 881042 | <input type="checkbox"/> |
| • 1/1GN rilsan steel wire basket h150mm                                     | PNC 881043 | <input type="checkbox"/> |
| • 2/1GN gray rilsan basket + 2 runners h150mm                               | PNC 881047 | <input type="checkbox"/> |
| • IOT module for refrigerated cabinets and counters                         | PNC 881298 | <input type="checkbox"/> |
| • POE switch  | PNC 922432 | <input type="checkbox"/> |

**Front**

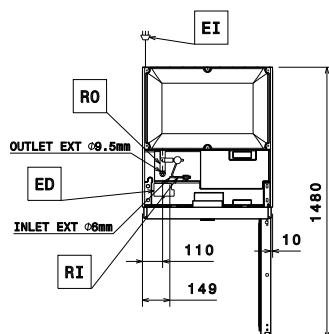


**Side**



EI = Electrical inlet (power)  
RI = Refrigerant Inlet  
RO = Refrigerant Outlet

**Top**



### Electric

Supply voltage:	220-240 V/1 ph/50/60 Hz
Electrical power max:	0.12 kW
Defrost Power:	0.41 kW
Plug type:	CE-SCHUKO

### Capacity:

Number and type of grids (included):	3 - GN 2/1
--------------------------------------	------------

### Key Information:

Net Volume:	
Door hinges:	
External dimensions, Width:	710 mm
External dimensions, Depth:	835 mm
External dimensions, Height:	2050 mm
Number and type of doors:	2x1/2 Full
Internal Dimensions, Width:	560 mm
Internal Dimensions, Depth:	707 mm
Internal Dimensions, Height:	711 mm
Net weight:	102 kg
Shipping volume:	1.41 m³
Height adjustment:	20/35 mm
Gross capacity:	670 lt

### Refrigeration Data

Control type:	Digital
Refrigeration power at evaporation temperature:	-10 °C
Min/Max internal humidity:	
Operating temperature min.:	-2 °C
Operating temperature max.:	10 °C
Compressor power:	
Refrigeration type:	R134a;R513A
Operating mode:	Ventilated
Suggested refrigeration power:	278 W
Condition at evaporation temperature:	-10 °C
Condition at condensation temperature:	55 °C
Condition at ambient temperature:	32 °C
Connection pipes (remote) - outlet:	9.5 mm
Connection pipes (remote) - inlet:	6 mm

### Sustainability

Current consumption:	0.6 Amps
Refrigerant type:	R134a
GWP Index:	1430
Refrigeration power:	0 W
Refrigerant weight:	0 g
Energy consumption (min,default):	0 - 0 kW/h